

AGES 4+

FurReal[®]
friends

Newborn Bear Cub



Bear cub colors and accessory may vary.

**CARE
GUIDE**

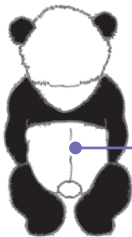
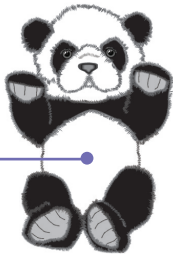
POWERED BY
POWR FUEL™ **x3**
BATTERIES INCLUDED

Replace with 3 x 1.5V "AAA" or LR03 size alkaline batteries. Phillips/cross head screwdriver (not included) needed to replace batteries.

Getting to Know Your Pet

Tummy sensor

When you pet your toy bear cub on its tummy, it will lift its head, move its arms and blink its eyes!



OFF/ON
switch and
battery door
on back.

A sensor is a part of the toy that responds to your touch!

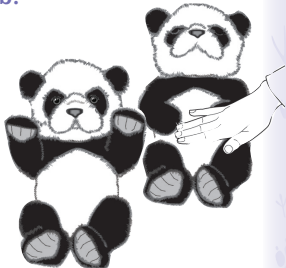
How to Play



To activate your toy bear cub, slide the OFF/ON switch on bear's back to the ON position. Once turned on, your "sleepy" bear cub toy will slowly "wake up." It will move its head to an upright position and open its eyes.

There are three ways to interact with your toy bear cub:

1. **Pet your bear cub's tummy** — watch as its arms move, its eyes open and close and it moves its head up and down to look at you.



2. **Pose its arms** — move them up or down to make your bear cub look cute!

3. **Cuddle your bear cub and hold down its tummy sensor for about 5 seconds** — it will start to get “drowsy” and make sleepy bear cub sounds. To “wake” it up again, tickle its tummy and watch it move.



If you stop playing with your bear cub for about a minute, it will go to “sleep” and shut down. You can “wake” it up again by tickling its tummy!

NOTE: The toy uses battery power whenever its switch is in the “ON” position. When you’re not playing with the toy, move its switch to the “OFF” position. This will help conserve battery life.

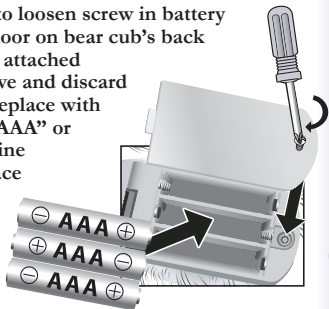
CLEANING & CARE

To clean your pet, gently brush its fur with a cloth or soft brush to loosen any dirt. Then use a slightly damp cloth to remove stains.

- Do not put in the washing machine.
- Do not submerge in water.
- Do not use detergent or stain removers on fur.
- Do not get wet; to remove stains, use only a slightly damp cloth on the fur.
- To prevent staining fur, wipe off dirt immediately.
- If toy gets wet, remove batteries and dry the fur; once fur is completely dry, replace batteries.
- **Avoid spilling food or beverages on the toy.**
- Do not throw or kick the toy, and do not push sharp objects through the speaker openings.
- Do not leave toy in direct sunlight: high temperatures will destroy the mechanism.

To Replace Batteries

Use a Phillips/cross head screwdriver (not included) to loosen screw in battery compartment door on bear cub's back (screw remains attached to door). Remove and discard old batteries. Replace with fresh 3 x 1.5V "AAA" or LR03 size alkaline batteries. Replace door and tighten screw.



IMPORTANT: BATTERY INFORMATION



CAUTION:

1. As with all small batteries, the batteries used with this toy should be kept away from small children who still put things in their mouths. If they are swallowed, promptly see a doctor and have the doctor phone (202) 625-3333 collect. If you reside outside the United States, have the doctor call your local poison control center.

2. Always follow the instructions carefully. Use only batteries specified and be sure to insert them correctly by matching the + and – polarity markings.
3. Do not mix old batteries and new batteries or standard (carbon-zinc) with alkaline batteries.
4. Remove exhausted or dead batteries from the product.
5. Remove batteries if product is not to be played with for a long time.
6. Do not short-circuit the supply terminals.
7. Should this product cause, or be affected by, local electrical interference, move it away from other electrical equipment. Reset (switching off and back on again or removing and re-inserting batteries) if necessary.
8. **RECHARGEABLE BATTERIES:** Do not mix these with any other types of batteries. Always remove from the product before recharging. Recharge batteries under adult supervision. **DO NOT RECHARGE OTHER TYPES OF BATTERIES.**



NOTE TO UK CONSUMERS: This product and its batteries must be disposed of separately at your local waste recycling centre. Do not dispose of in your household waste bin.

FCC STATEMENT

This device complies with part 15 of the FCC Rules. Operation is subject to the following two conditions: (1) This device may not cause harmful interference, and (2) this device must accept any interference received, including interference that may cause undesired operation.

This equipment has been tested and found to comply with the limits for a Class B digital device, pursuant to Part 15 of the FCC Rules. These limits are designed to provide reasonable protection against harmful interference in a residential installation. This equipment generates, uses and can radiate radio frequency energy, and, if not installed and used in accordance with the instructions, may cause harmful interference to radio communications. However, there is no guarantee that interference will not occur in a particular installation. If this equipment does cause harmful interference to radio or television reception, which can be determined by turning the equipment off and on, the user is encouraged to try to correct the interference by one or more of the following measures:

- Reorient or relocate the receiving antenna.
- Increase the separation between the equipment and the receiver.
- Consult the dealer or an experienced radio/TV technician for help.

CAUTION: Changes or modifications to this unit not expressly approved by the party responsible for compliance could void the user's authority to operate the equipment.



Product and colors may vary.
© 2009 Hasbro. All Rights Reserved.
TM & ® denote U.S. Trademarks.
U.S. Pat. Nos. 6811461 and 7234989.

FurRealfriends.com

Questions? Call 1-800-844-3733

93979 Asst.



PN 6967300000